

CONTENTS

About Us 02

Road Carbon Wheels 04

Road Alloy Wheels 06

Handlebar Grips 07

Handlebar Tapes 09

Handlebar Plugs 10

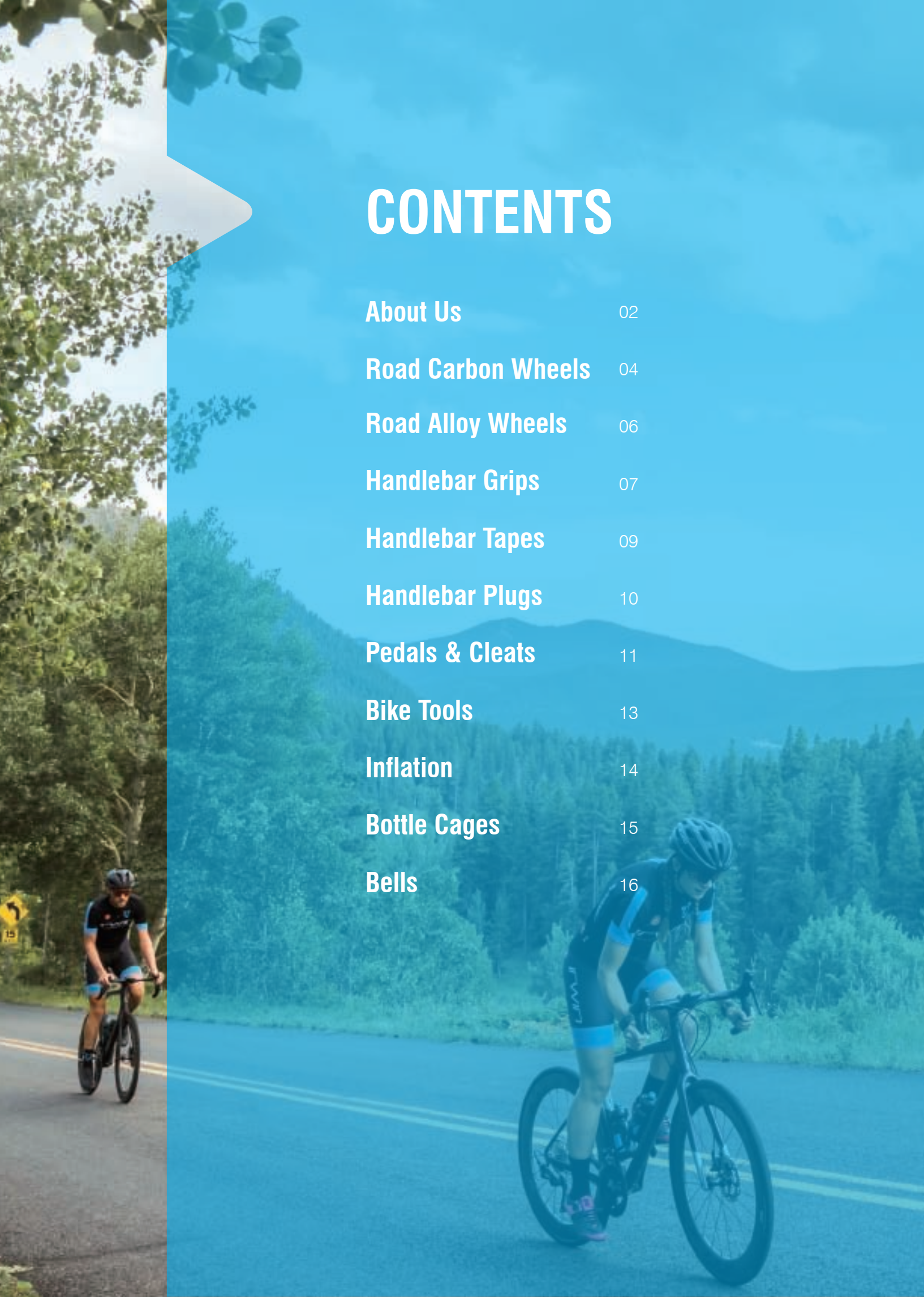
Pedals & Cleats 11

Bike Tools 13

Inflation 14

Bottle Cages 15

Bells 16





QUALITY BIKE PARTS & ACCESSORIES SUPPLIER

- **DECADES OF SOLID EXPERIENCE IN BIKE INDUSTRY.**
- **SPECIALIZING IN INTEGRATION AND CUSTOMIZATION.**
- **TOTAL SOLUTION PROVIDER FOR ALL BIKE PARTS AND ACCESSORIES.**



ROAD CARBON WHEELS



AON TLR 38 | Road Carbon Wheels

RIM	38mm tubeless ready UD full carbon clincher External / Internal width : 25mm / 18mm
HUB	Front 2 sealed cartridge Ceramic bearings Rear 4 sealed cartridge Ceramic bearings with 7.05 degree engagement. Interchangeable with Campagnolo cassette body and Sram XDR driver
SPOKE	Front (16) Sapim CX-Ray. Black Rear (21) Sapim CX-Ray. Black
NIPPLE	Alloy. Black
LACING	Front Radial Rear 3X / Radial
WEIGHT	1,355 grams
RIDER WEIGHT LIMIT	100 kilograms (220 lbs.)



AON TLR 60 | Road Carbon Wheels

RIM	60mm tubeless ready UD full carbon clincher External / Internal width : 25mm / 18mm
HUB	Front 2 sealed cartridge Ceramic bearings Rear 4 sealed cartridge Ceramic bearings with 7.05 degree engagement. Interchangeable with Campagnolo cassette body and Sram XDR driver
SPOKE	Front (16) Sapim CX-Ray. Black Rear (21) Sapim CX-Ray. Black
NIPPLE	Alloy. Black
LACING	Front Radial Rear 3X / Radial
WEIGHT	1,470 grams
RIDER WEIGHT LIMIT	100 kilograms (220 lbs.)



AON TLR 88 | Road Carbon Wheels

RIM	88mm tubeless ready UD full carbon clincher External / Internal width : 25mm / 18mm
HUB	Front 2 sealed cartridge Ceramic bearings Rear 4 sealed cartridge Ceramic bearings with 7.05 degree engagement. Interchangeable with Campagnolo cassette body and Sram XDR driver
SPOKE	Front (16) Sapim CX-Ray. Black Rear (21) Sapim CX-Ray. Black
NIPPLE	Alloy. Black
LACING	Front Radial Rear 3X / Radial
WEIGHT	1,765 grams
RIDER WEIGHT LIMIT	100 kilograms (220 lbs.)

ROAD CARBON WHEELS



AON DX 38 | Road Carbon Disc Brake Wheels

RIM	38mm tubeless ready UD full carbon clincher External / Internal width : 27mm / 20mm
HUB	Front 2 sealed cartridge Enduro bearings Rear 4 sealed cartridge Enduro bearings with 7.05 degree engagement. Center Lock. Interchangeable with Sram XDR driver and Shimano 12S
SPOKE	Front (24) Sapim CX-Ray. Black Rear (24) Sapim CX-Ray. Black
NIPPLE	Alloy. Black
LACING	Front 2 cross Rear 2 cross
WEIGHT	1,570 grams
RIDER WEIGHT LIMIT	100 kilograms (220 lbs.)



AON DX 60 | Road Carbon Disc Brake Wheels

RIM	60mm tubeless ready UD full carbon clincher External / Internal width : 27mm / 20mm
HUB	Front 2 sealed cartridge Enduro bearings Rear 4 sealed cartridge Enduro bearings with 7.05 degree engagement. Center Lock. Interchangeable with Sram XDR driver and Shimano 12S
SPOKE	Front (24) Sapim CX-Ray. Black Rear (24) Sapim CX-Ray. Black
NIPPLE	Alloy. Black
LACING	Front 2 cross Rear 2 cross
WEIGHT	1,650 grams
RIDER WEIGHT LIMIT	100 kilograms (220 lbs.)



AON DX 88 | Road Carbon Disc Brake Wheels

RIM	88mm tubeless ready UD full carbon clincher External / Internal width : 27mm / 20mm
HUB	Front 2 sealed cartridge Enduro bearings Rear 4 sealed cartridge Enduro bearings with 7.05 degree engagement. Center Lock. Interchangeable with Sram XDR driver and Shimano 12S
SPOKE	Front (24) Sapim CX-Ray. Black Rear (24) Sapim CX-Ray. Black
NIPPLE	Alloy. Black
LACING	Front 2 cross Rear 2 cross
WEIGHT	1,980 grams
RIDER WEIGHT LIMIT	100 kilograms (220 lbs.)

ROAD CARBON WHEELS



AON ARX 40 | Road Carbon Disc Brake Wheels

RIM	40mm hookless UD full carbon clincher External / Internal width : 28mm / 24.5mm
HUB	Front 2 sealed cartridge Enduro bearings Rear 4 sealed cartridge Enduro bearings with 7.05 degree engagement. Center Lock. Interchangeable with Sram XDR driver and Shimano 12S
SPOKE	Front (24) Sapim CX-Ray. Black Rear (24) Sapim CX-Ray. Black
NIPPLE	Alloy. Black
LACING	Front 2 cross Rear 2 cross
WEIGHT	1,455 grams
RIDER WEIGHT LIMIT	100 kilograms (220 lbs.)

ROAD ALLOY WHEELS



ARLO 30 | Road Alloy Wheels

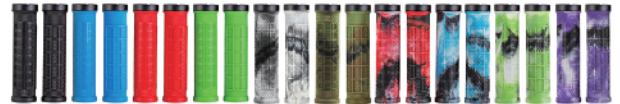
RIM	30mm. Welded tubeless ready aluminum clincher External / Internal width: 22mm / 18mm
HUB	Front 2 sealed cartridge Enduro bearings Rear 4 sealed cartridge Enduro bearings with 3 degree engagement. Interchangeable with Campagnolo cassette body
SPOKE	Front (20) Aero stainless steel. Black Rear (24) Aero stainless steel. Black
NIPPLE	Brass. Black
LACING	Front Radial Rear 2 cross / 2 cross
WEIGHT	1,635 grams
RIDER WEIGHT LIMIT	100 kilograms (220 lbs.)

HANDLEBAR GRIPS



IHG-03

MATERIAL	TPR rubber
FEATURE	Anti-slip
LENGTH	130mm
INNER DIAMETER	22.8mm
LOCK RINGS	Matte black lock rings with stainless steel screws
LOGO	Laser etched logo on lock rings
PACKAGE INCLUDES	Grips, end plugs
COLOR OPTIONS	Single color : Black, Blue, Red, Green Mixed color : Gray/White/Black, Black/Green/Brown, Red/White/Black, Blue/White/Black, Green/White/Black, Purple/White/Black



IHG-06

MATERIAL	TPR rubber
FEATURE	Anti-slip
LENGTH	130mm
INNER DIAMETER	22.8mm
STYLE	Closed end design
LOCK RINGS	Matte black lock rings with stainless steel screws
LOGO	Laser etched logo on lock rings
PACKAGE INCLUDES	Grips
COLOR OPTIONS	Single color : Black, Blue, Red, Green, Gray Mixed color : Red/Black, Blue/Black, Purple/Black, White/Black, Black/Yellow/Orange



IHG-07

MATERIAL	TPR rubber
FEATURE	Anti-slip
LENGTH	140mm
INNER DIAMETER	20.5mm
PACKAGE INCLUDES	Grips, end plugs
COLOR OPTIONS	Single color : Black, Red, Blue, Green, Gray, Purple Mixed color : Red/White/Black, Blue/White/Black, Green/White/Black, Purple/White/Black, Gray/White/Black, Black/Green/Brown



HANDLEBAR GRIPS



IHG-08

MATERIAL	TPR rubber
FEATURE	① Anti-slip ② Oversize bar end for extra bump protection
LENGTH	105mm
INNER DIAMETER	20.5mm
PACKAGE INCLUDES	Grips

COLOR OPTIONS Black, Blue, Green, Pink



IHG-09

MATERIAL	TPR rubber
FEATURE	Anti-slip
LENGTH	90mm
INNER DIAMETER	20.5mm
PACKAGE INCLUDES	Grips, end plugs

COLOR OPTIONS Black, Gray



IHG-11

MATERIAL	TPR rubber
FEATURE	① Anti-slip ② Ergonomic winged grips for wrist support
LENGTH	130mm
INNER DIAMETER	22.8mm
LOCK RINGS	Matte black lock rings with stainless steel screws
LOGO	Laser etched logo on lock rings
PACKAGE INCLUDES	Grips, end plugs

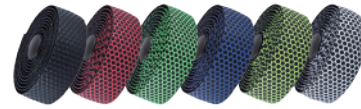
COLOR OPTIONS Black

HANDLEBAR TAPES



IBT-01

MATERIAL	Hexagon patterned silicone textured surface, flexible fiber cloth, EVA
FEATURE	① Anti-slip ② Breathable ③ Shockproof
SIZE	Length 210cm x width 3cm
THICKNESS	2.5mm
PACKAGE INCLUDES	Bar tapes, end plugs, finishing tapes
COLOR OPTIONS	Black, Red, Green, Blue, Yellow, White



IBT-02

MATERIAL	PU with wave pattern, EVA
FEATURE	① Wear resistance ② Anti-slip ③ Shockproof
SIZE	Length 210cm x width 3cm
THICKNESS	2.5mm
PACKAGE INCLUDES	Bar tapes, end plugs, finishing tapes, trim tapes
COLOR OPTIONS	Black, White



IBT-03

MATERIAL	Suede surface, EVA
FEATURE	① Soft and comfortable ② Suede surface for better grip ③ Shockproof
SIZE	Length 200cm x width 3cm
THICKNESS	2.5mm
PACKAGE INCLUDES	Bar tapes, end plugs, finishing tapes, trim tapes
COLOR OPTIONS	Red, White, Black, Gray, Blue, Camo green, Camo gray, Camo blue, Camo red, Camo yellow, Rainbow mix



IBT-05

MATERIAL	Cork, EVA
FEATURE	① Anti-slip ② Shockproof
SIZE	Length 190cm x width 3cm
THICKNESS	2.5mm
PACKAGE INCLUDES	Bar tapes, end plugs, finishing tapes
COLOR OPTIONS	Black, White

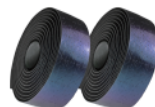


HANDLEBAR TAPES



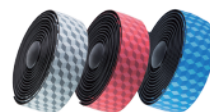
IBT-07

MATERIAL	PU, EVA
FEATURE	① Wear resistance ② Shockproof ③ Unique oil slick surface
SIZE	Length 210cm x width 3cm
THICKNESS	2.5mm
PACKAGE INCLUDES	Bar tapes, end plugs, finishing tapes
COLOR OPTIONS	Oil slick



IBT-08

MATERIAL	PU, EVA
FEATURE	① Wear resistance ② Shockproof ③ Stylish gradient design
SIZE	Length 210cm x width 3cm
THICKNESS	2.5mm
PACKAGE INCLUDES	Bar tapes, end plugs, finishing tapes
COLOR OPTIONS	Gradient black, Gradient red, Gradient Blue

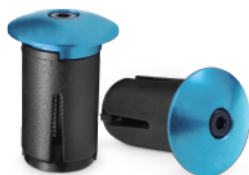


IBT-09

MATERIAL	PU, micro fiber, EVA
FEATURE	① Breathable ② Sweat absorption ③ Tacky touch ④ Shockproof
SIZE	Length 216cm x width 3cm
THICKNESS	3mm
PACKAGE INCLUDES	Bar tapes, end plugs, finishing tapes, trim tapes
COLOR OPTIONS	Black



HANDLEBAR PLUGS



IEP-01

MATERIAL	Aluminum cap and plastic body with stainless steel screw
LOGO	Laser etched logo
CAP DIAMETER	25.5mm
WEIGHT	28g (1oz)/pr
COLOR OPTIONS	Anodized black, Anodized red, Powder coating white, Anodized silver, Anodized blue, Anodized gold



PEDALS & CLEATS



IPD-02

COMPATIBILITY	Look Delta and Shimano SPD system
BODY	Die-cast aluminum
SPINDLE	9/16" CNC machined Cr-Mo
BEARING	Needle, sealed bearing
SIZE	87 x 99mm (3.4 x 3.9inch)
WEIGHT	540g (19oz)/pr
LOGO	Printing and laser etched logo
PACKAGE INCLUDES	Pedals, Look Delta system cleats, Shimano SPD system cleats, instruction manual



ICT-01

COMPATIBILITY	Look Delta pedals
MODE	9 degree floating
MATERIAL	Engineering thermoplastic
WEIGHT	46g (1.6oz)/pr
PACKAGE INCLUDES	Cleats, washers, bolts



ICT-02

COMPATIBILITY	Shimano SPD pedals
MODE	Single direction release
MATERIAL	Cr-Mo steel
WEIGHT	40g (1.4oz)/pr
PACKAGE INCLUDES	Cleats, washers, bolts, metal plates, cleat nuts



ICT-03

COMPATIBILITY	Garmin Vector pedals
MODE	6 degree floating
MATERIAL	Engineering thermoplastic and TPU
FEATURE	Anti-slip surface
WEIGHT	48g (1.7oz)/pr
PACKAGE INCLUDES	Cleats, washers, bolts

PEDALS & CLEATS



ICT-04

COMPATIBILITY	Look Keo pedals
MODE	7 degree floating
MATERIAL	Engineering thermoplastic and TPU
FEATURE	Anti-slip surface
WEIGHT	46g (1.6oz)/pr
PACKAGE INCLUDES	Cleats, washers, bolts



ICT-05

COMPATIBILITY	Shimano SPD-SL pedals
MODE	6 degree floating
MATERIAL	Engineering thermoplastic and TPU
FEATURE	Anti-slip surface
WEIGHT	56g (2oz)/pr
PACKAGE INCLUDES	Cleats, washers, bolts



ICT-06

COMPATIBILITY	Peloton and Look Delta pedals
MATERIAL	Engineering thermoplastic
SIZE	140-150 x 83mm (5.5-5.9 x 3.3inch)
WEIGHT	359g (12.6oz)/pr
PACKAGE INCLUDES	Toe cages, 2.5mm Allen key, instruction manual

BIKE TOOLS



ITL-02

10 in 1 Multitool

TOOL INCLUDES Hex Allen key 2, 3, 4, 5, 6mm
Phillips head #1
Flat head #5
Torx T-25
Spoke wrench 14,15G

MATERIAL Chrome Vanadium steel (CR-V)
FINISH Polished finish body
FOLDED DIMENSIONS 71 x 27 x 7mm (2.8 x 1.1 x 0.3inch)
WEIGHT 78g (2.8oz)
LOGO Laser etched logo



ITL-05

20 in 1 Multitool

TOOL INCLUDES Hex Allen key 2, 2.5, 3, 4, 5, 6, 8mm
Spoke wrench 13, 14, 15, 16G
Phillips head #2
Flat head #5
Box wrench 8, 9, 10mm
Torx T-25
T30 (Mavic Spline)
Chain tool
Bottle opener

MATERIAL Chrome Vanadium steel (CR-V)
FINISH Polished finish body
FOLDED DIMENSIONS 71 x 40 x 15mm (2.8 x 1.6 x 0.6inch)
WEIGHT 125g (4.4oz)
LOGO Laser etched logo
PACKAGE INCLUDES Multitool, pouch bag



ITL-03

Adjustable Torque Wrench

TOOL INCLUDES Hex Allen key 3, 4, 5mm
Torx T-25

ADJUSTABLE TORQUE 4, 5, 6Nm
BITS MATERIAL Chrome Vanadium steel (CR-V)
DIMENSIONS 130 x 110 x 30mm (5.1 x 4.3 x 1.2inch)
WEIGHT 186g (6.6oz)
LOGO Printing logo
PACKAGE INCLUDES Torque wrench, 6mm Allen key, instruction manual



ITL-04

6 in 1 Y Wrench

TOOL INCLUDES Hex Allen key 2, 4, 5, 6mm
Torx T-25
Phillips head #2

BITS MATERIAL S2 steel
DIMENSIONS 115 x 115 x 20mm (4.5 x 4.5 x 0.8inch)
WEIGHT 105g (3.7oz)
LOGO Poly nameplate logo
PACKAGE INCLUDES Y wrench, instruction manual

INFLATION



IMP-03

CO2 Inflator

COMPATIBILITY

Presta and Schrader valve

FEATURE

High volume airflow

WEIGHT

38g (1.3oz)

LOGO

Laser etched logo on inflator

PACKAGE INCLUDES

CO2 inflator, neoprene foam sleeve, instruction manual



IMP-05

Mini Bike Pump

COMPATIBILITY

Presta and Schrader valve

BARREL MATERIAL
FEATURE

Aluminum

① Twin-valve for threaded Presta and Schrader

② Switchable mode for High Volume and High Pressure

PRESSURE

High Volume mode → up to 80 PSI

High Pressure mode → up to 120 PSI

WEIGHT

116g (4oz)

LENGTH

205mm (8.07inch)

LOGO

Laser etched logo

PACKAGE INCLUDES

Pump, mounting bracket, instruction manual



BOTTLE CAGES



IBC-01

MATERIAL	Nylon fiber
WEIGHT	36g (1.3oz)/pc
LOGO	Printing logo
PACKAGE INCLUDES	Bottle cage, stainless steel bolts
COLOR OPTIONS	Black



IBC-02

MATERIAL	Ultra-light aluminum
WEIGHT	18g (0.63oz)/pc
LOGO	Laser etched logo
PACKAGE INCLUDES	Bottle cage, stainless steel bolts
COLOR OPTIONS	Sandblasted anodized black



IBC-03

MATERIAL	Aluminum
WEIGHT	64g (2.3oz)/pc
LOGO	Laser etched logo
PACKAGE INCLUDES	Bottle cage, stainless steel bolts
COLOR OPTIONS	Black



IBC-04

MATERIAL	Aluminum
WEIGHT	54g (1.9oz)/pc
LOGO	Printing logo
PACKAGE INCLUDES	Bottle cage, stainless steel bolts
COLOR OPTIONS	Matte black, Gloss black

BELLS



IBL-02

MATERIAL Aluminum (black) or brass top, plastic base
DOMESIZE 28mm (1.1inch)
FITS HANDLEBAR SIZE Diameter 22.2~25.4mm (0.87~1inch)

COLOR OPTIONS Brass, Black



IBL-03

MATERIAL Aluminum top, plastic base
DOMESIZE 55mm (2.2inch)
FITS HANDLEBAR SIZE Diameter 22.2mm (0.87inch)

COLOR OPTIONS US Flag, Black,



IBL-04

MATERIAL Steel
DOMESIZE 57mm (2.2inch)
FITS HANDLEBAR SIZE Diameter 22.2mm (0.87inch)

COLOR OPTIONS Green, Creamy white, Blue, Pink, Black

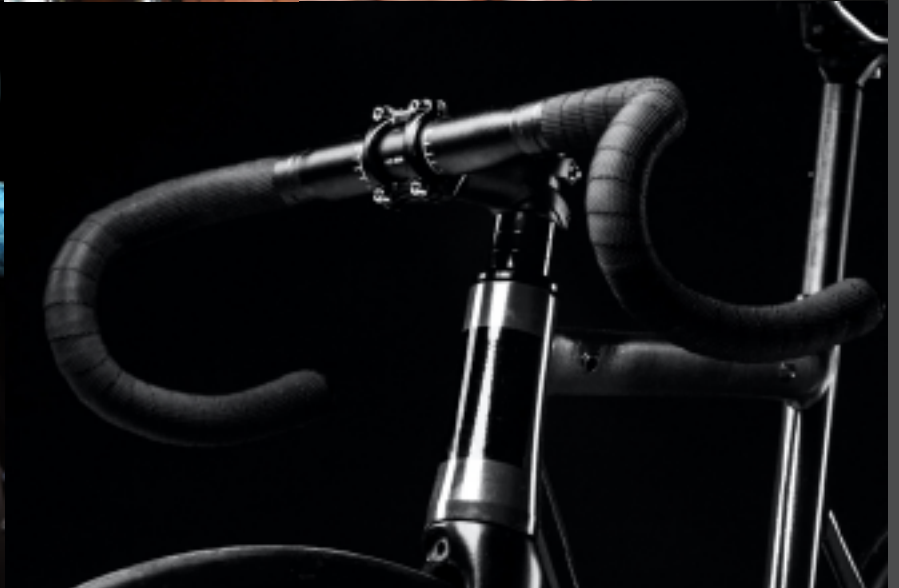
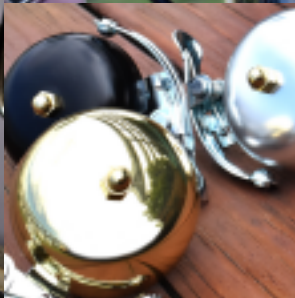


IBL-05

MATERIAL Brass or aluminum (black, silver)
DOMESIZE 55mm (2.2inch)
FITS HANDLEBAR SIZE Diameter 22.2~25.4mm (0.87~1inch)

COLOR OPTIONS Brass, Black, Silver





IRWINTM

IRWIN CO., LTD.

5F, No. 189, Sin Hu 3rd Road, Nei Hu District, Taipei 11494, Taiwan
Tel +886-2-8791-7296 | Fax +886-2-8792-1259 | info@irwin.com.tw

